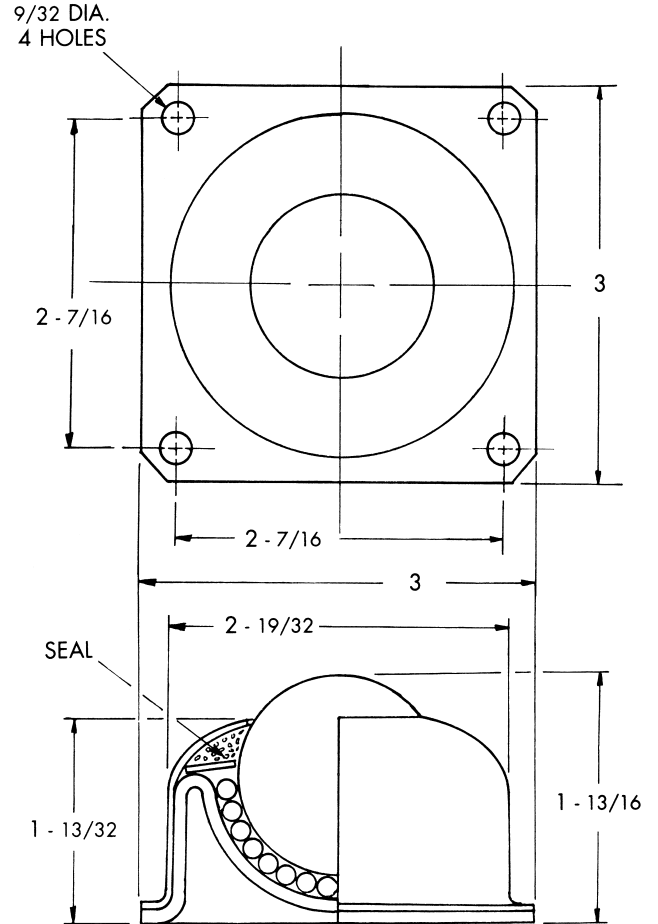
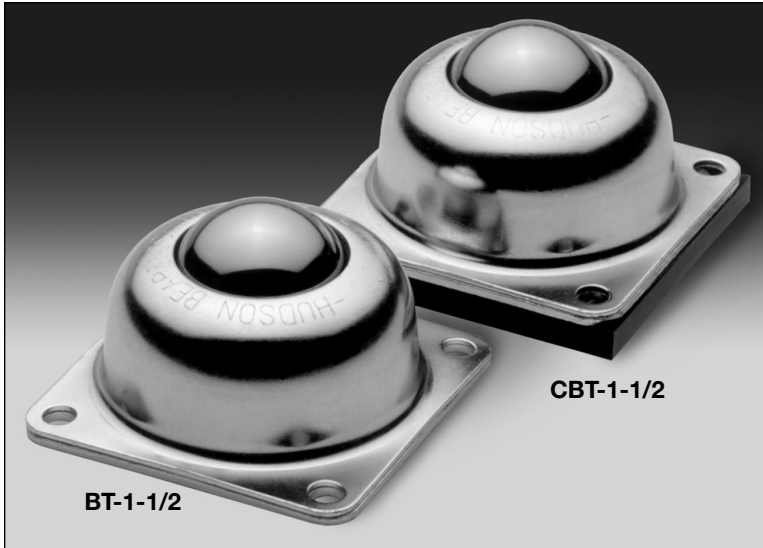


HUDSON BEARINGS BALL TRANSFERS

BT-1-1/2



FOUR-HOLE, FLANGE-MOUNTED, ALL-STEEL

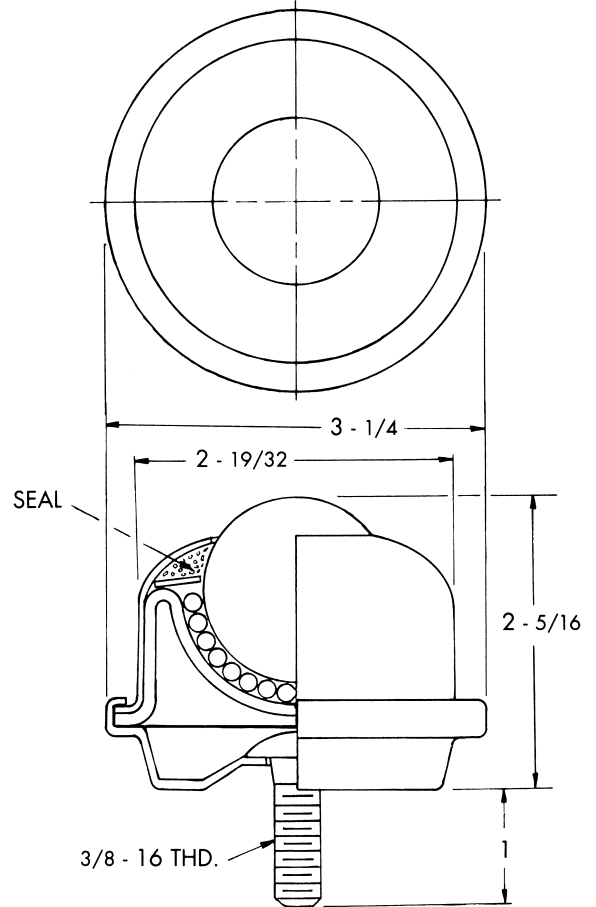
- 1-1/2" Main ball rotates on (90) 3/16" support balls.
- Ball support cup is hardened and plated.
- Protective cover assures low torque and longevity.
- Units available in plated carbon steel or stainless steel to provide corrosion resistance.
- Nylon main ball is available for non-marking applications.
- Neoprene cushion available to permit vertical deflection and assist with uniform load distribution (part number **CBT-1-1/2**).

PART NO.	BALL MATERIAL	HOUSING MAT.	LOAD CAP.
BT-1-1/2CS	Carbon Steel	Carbon Steel	250 lbs.
NBT-1-1/2CS	Nylon	Carbon Steel	125 lbs.
BT-1-1/2CS/SS	Stainless	Carbon Steel	250 lbs.
BT-1-1/2SS	Stainless	Stainless	250 lbs.

HUDSON BEARINGS Inc.

HUDSON BEARINGS BALL TRANSFERS

SBT-1-1/2



STUD-MOUNTED, ALL-STEEL, FOR HEAVY-DUTY APPLICATIONS

- ¥ Threaded stem size: 3/8-16
- ¥ 1-1/2" Main ball rotates on (90) 3/16" support balls.
- ¥ Ball support cup is hardened and plated.
- ¥ Protective cover assures low torque and longevity.
- ¥ Units available in plated carbon steel or stainless steel to provide corrosion resistance.
- ¥ Nylon main ball is available for non-marking applications.
- ¥ Neoprene cushion available to permit vertical deflection and assist with uniform load distribution (part number CSBT-1-1/2).

PART NO.	BALL MATERIAL	HOUSING MAT.	LOAD CAP.
SBT-1-1/2CS	Carbon Steel	Carbon Steel	250 lbs.
NSBT-1-1/2CS	Nylon	Carbon Steel	125 lbs.
SBT-1-1/2CS/SS	Stainless	Carbon Steel	250 lbs.

HUDSON BEARINGS Inc.

13 Colton Road, East Lyme, CT 06333 ¥ Tel: 860-739-6988 ¥ Fax: 860-739-7251 ¥ www.hudsonbearings.com

HUDSON BEARINGS BALL TRANSFERS

HDBT-1-3/16



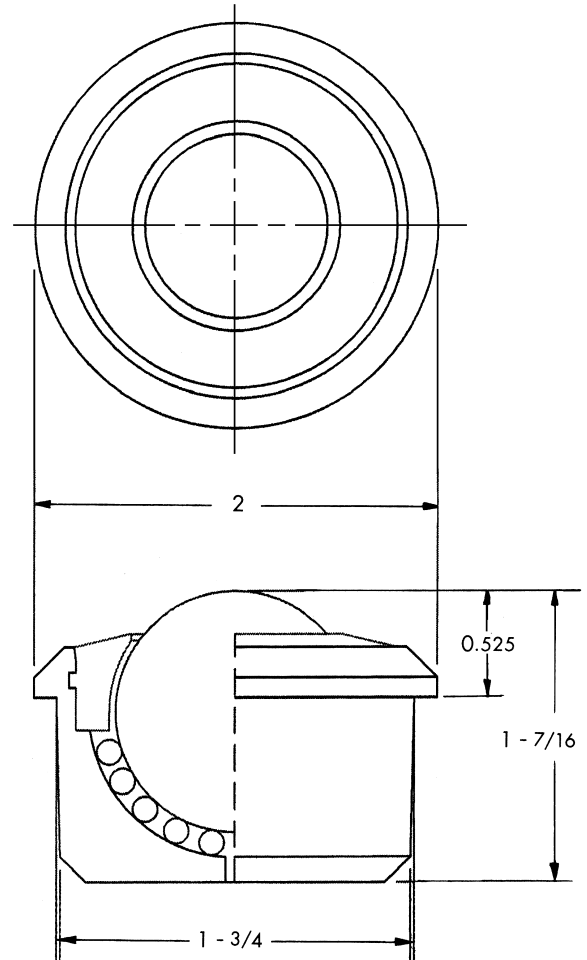
500 LB. CAPACITY BALL TRANSFER

- Integral flange at top allows unit to be dropped into a 1-3/4" diameter hole.
- 1-3/16" Main ball rotates on 1/8" support balls.
- Ball support cup is machined from solid steel and is hardened and plated for longevity.
- Retaining ring is solid plastic.
- Units available with carbon steel balls or stainless steel balls to provide corrosion resistance.

HDBT-1-3/16SR

Available with exterior sound reduction collar.

- Nylon collar, recessed below the flange, reduces noise when the unit is installed in a metal application surface.

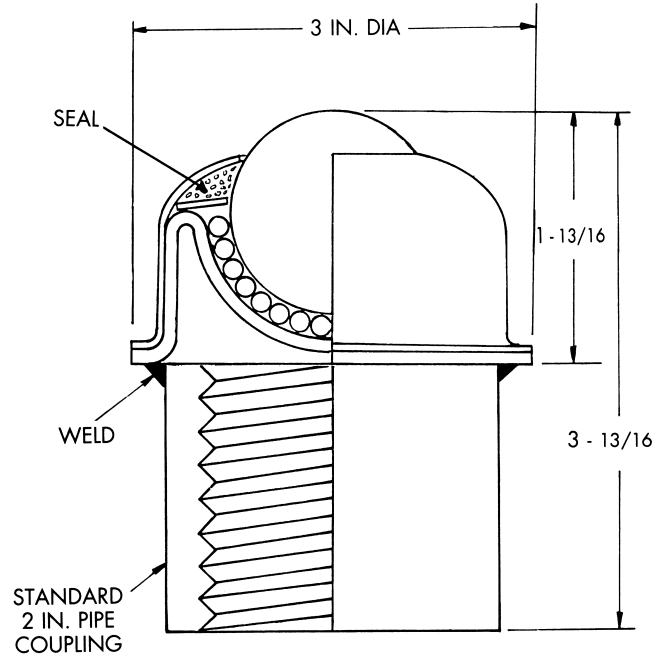


HUDSON BEARINGS Inc.

13 Colton Road, East Lyme, CT 06333 • Tel: 860-739-6988 • Fax: 860-739-7251 • www.hudsonbearings.com

HUDSON BEARINGS BALL TRANSFERS

PBT-1-1/2



PIPE-MOUNTED BALL TRANSFER

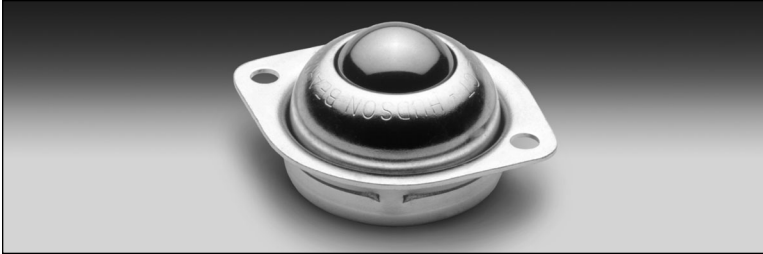
- Allows positioning on a 2" pipe pedestal in front of shears or press breaks.
- 1-1/2" Main ball rotates on (90) 3/16" support balls.
- Ball transfer unit is welded to a standard carbon steel 2" pipe coupling.
- Ball support cup is hardened and plated.
- Protective cover assures low torque and longevity.
- Units available with carbon steel balls or stainless steel balls to provide corrosion resistance.
- Nylon main ball is available for non-marking applications.

PART NO.	BALL MATERIAL	HOUSING MAT.	LOAD CAP.
PBT-1-1/2CS	Carbon Steel	Carbon Steel	250 lbs.
NPBT-1-1/2CS	Nylon	Carbon Steel	125 lbs.
PBT-1-1/2CS/SS	Stainless	Carbon Steel	250 lbs.

HUDSON BEARINGS Inc.

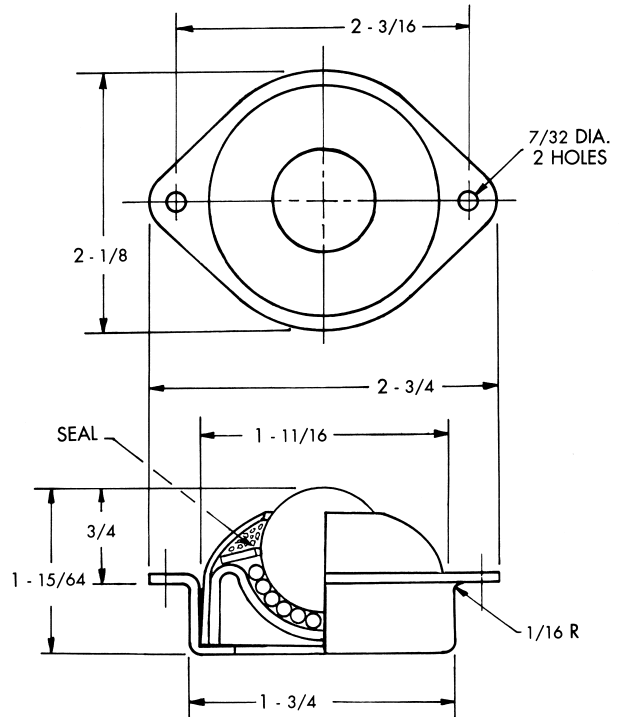
HUDSON BEARINGS BALL TRANSFERS

LPBT-1



LOW-PROFILE, TWO-HOLE, FLANGE-MOUNTED, ALL-STEEL BALL TRANSFER

- Designed to be recessed into the surface of the application in a 1-3/4" hole.
- 1" Main ball rotates on (80) 1/8" support balls.
- Ball support cup is hardened and plated.
- Protective cover assures low torque and longevity.
- Units available in plated carbon steel or stainless steel to provide corrosion resistance.
- Nylon main ball is available for non-marking applications.



PART NO.	BALL MATERIAL	HOUSING MAT.	LOAD CAP.
LPBT-1CS	Carbon Steel	Carbon Steel	75 lbs.
NLPBT-1CS	Nylon	Carbon Steel	35 lbs.
LPBT-1CS/SS	Stainless	Carbon Steel	75 lbs.
LPBT-1SS	Stainless	Stainless*	75 lbs.

*Mounting cup is plated carbon steel

HUDSON BEARINGS Inc.